

**ORGANISATION OF
PUBLIC HEALTH ENGINEERING DEPARTMENT,
04.02.2025**

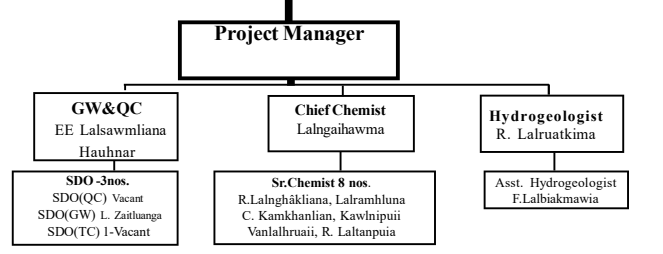
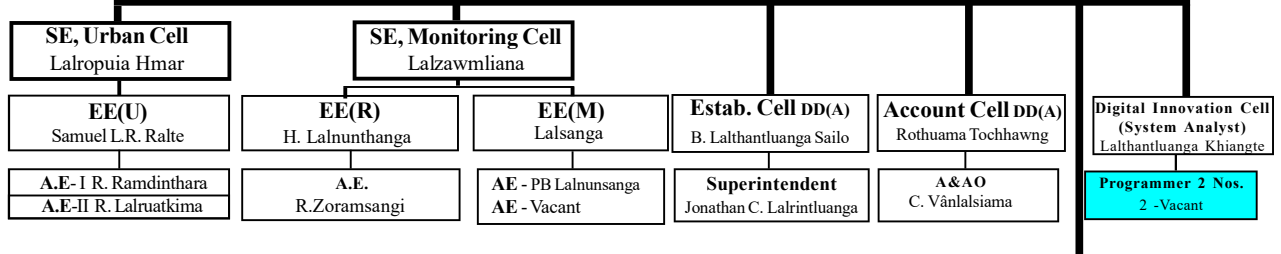
= VACANT POST

**Teresy Vanlalhruii, MCS
Secy. to the Govt. of Mizoram**

**Er. H.Duhkima
Engineer-in-Chief, PHED**

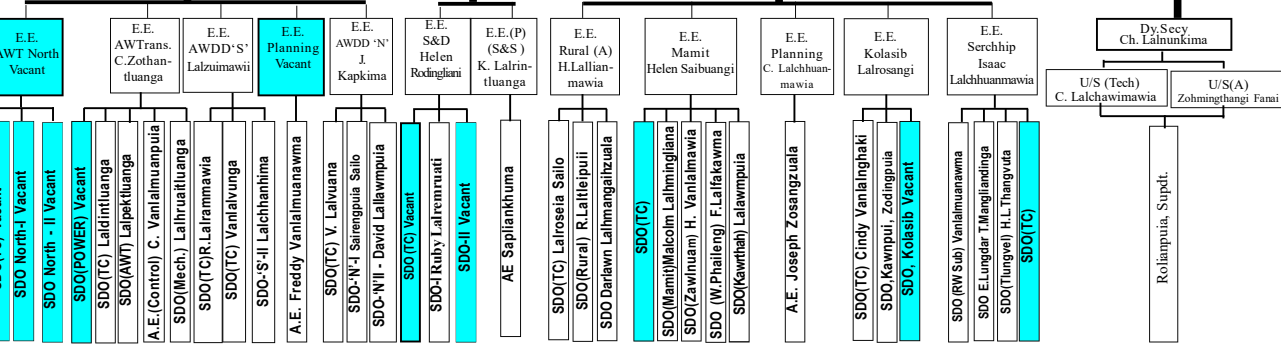
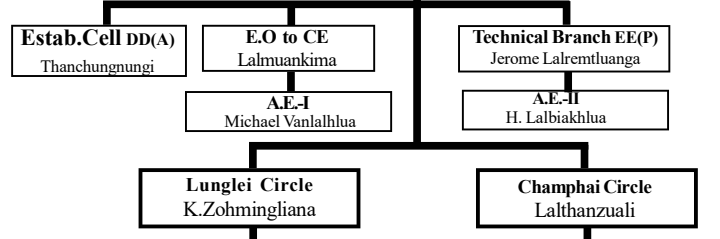
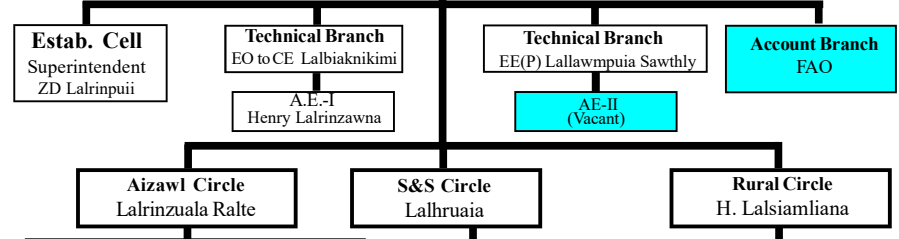
**Er. Lalropuia
Chief Engineer, Hqrs&WR**

**Er. Lalropuia
Director, PMU**

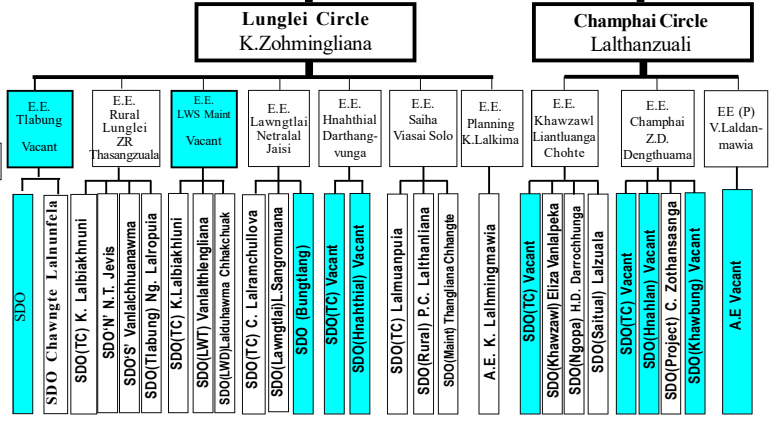


**Chief Engineer Zone-I
Er. Zodinthari**

**Chief Engineer Zone-II
Er. Ngentluanga**



**Joint Secretary
C. Zirkhuma**



REFERENCES

- AWTD = Aizawl Water Transmission Division
- AWDD = Aizawl Water Distribution Division
- PMU = Project Management Uni
- DD Accts = Deputy Director (Accounts)
- DD Admn = Deputy Director (Administration)
- GW&QC = Ground Water & Quality Control

- LWSM = Lunglei Water Supply Maintenance
- S & D = Sewerage & Drainage Division
- S&S = Sewerage & Sanitation
- TC = Technical Consultant
- Hqrs&WR = Headquarters & Water Resources

SANCTIONED POST :

- Engineer -in- Chief = 1 No.
- Chief Engineer = 3 Nos.
- SE/Jt. Secy(Tech) = 8 Nos.
- EE/US(Tech) = 30 Nos.
- AE/SDO = 72 Nos.
- Hydrogeologist = 1 No.

- Asst. Hydrogeologist = 1 No
- Stenographer G -I = 1 No
- DDA (Adm) = 2 Nos
- DDA (Accts) = 1 No
- FAO = 1 No
- A&AO = 1 No
- System Analyst = 1 No

- Programmer = 2 Nos.
- Superintendent = 2 No
- Chief Chemist = 1 No.
- Sr. Chemist = 8 nos.
- Director (Project Management Unit) = 1 no.
- Project Manager = 1 No.